

CHAINS

ROLLER CHAINS TPM [®]	page 3
ROLLER CHAINS QRC [®]	5
ROLLER CHAINS CRT [®]	11

POLYETHYLENE GUIDE RAILS

POLYETHYLENE CHAIN GUIDE RAIL	14
METAL STEEL HOLDER	19



COUPLING

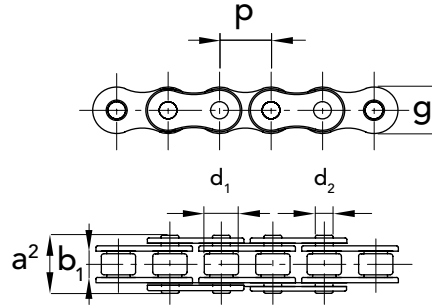


OFFSET



CHAINS MANUFACTURED
BY AN **ISO 9001** CERTIFIED
FACTORY

Pack of 10m or 100m



f = resistant surface

SIMPLE

ISO N.	CHAIN P. NUMBER	COUPLING P. NUMBER	OFFSET P. NUMBER	P		b ₁ min. mm	d ₂ mm	d ₁ max mm	a ² max mm	g max mm	f cm ²	breaking load N. mm ²	kg/m =
				mm	inch								
081-1	70110008	70110058	70110088	12,7	1/2"	3,3	3,59	7,75	10,2	9,9	0,2	7200	0,28
083-1	70111008	70111058	70111088	12,7	1/2"	4,88	4,09	7,75	12,9	10,3	0,32	9200	0,42
084-1	70171008	70171058	70171088	12,7	1/2"	4,88	4,09	7,75	14,8	11,15	0,35	11000	0,59
084-1	72171008	-	-	12,7	1/2"	-	-	7,75	-	-	-	-	-

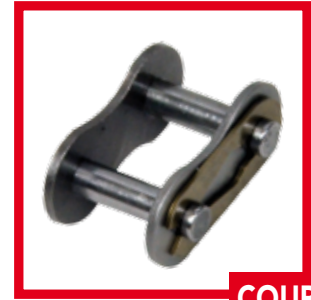
Please note: all TPM® chains are subject to pretensioning.
This operation is made in order to fix dimension and stretching.

CAD drawings available on our site
www.chiaravalli.com

Quantity, availability and prices
on B2B Chiaravalli



**OFFSET
SIMPLE**



COUPLING

(*)

SIMPLE - CLIP



ONLY FOR
ARTICLE
O5 B1

**OFFSET
TRIPLE**



COUPLING

(◆)

SIMPLE - COTTER PIN



**OFFSET
DOUBLE**



**COUPLING
DOUBLE**



**OFFSET
TRIPLE**



**COUPLING
TRIPLE**

(*) COUPLINGS with CLIP

(*) COUPLINGS with CLIP part number5057
(◆) and/or COTTER PIN part number5157

(◆) COUPLINGS with COTTER PIN

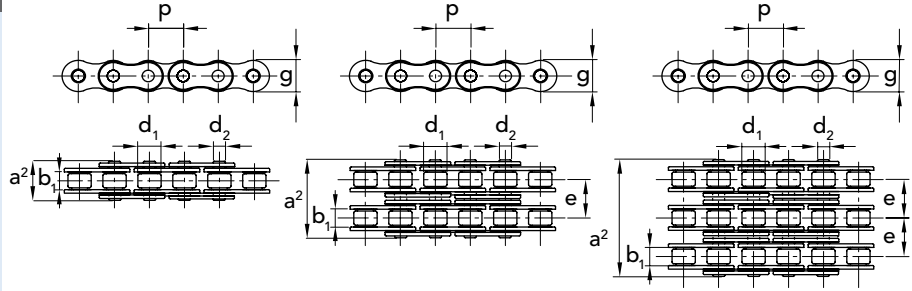
from 04 (B1, B2, B3)
to 12 (B1, B2, B3)

16 (B1, B2, B3)

from 20 (B1, B2, B3)
to 32 (B1, B2, B3)



CHAINS MANUFACTURED
BY AN ISO 9001 CERTIFIED
FACTORY



f = resistant surface

Pack of 5m

ROLLER CHAINS EUROPEAN SERIES QRC®

4

SIMPLE

ISO N.	COUPLING		OFFSET	P		b ₁	d ₂	d ₁	a ²	g	f	breaking load N. min.	kg/m =
	PART NUMBER	PART NUMBER	PART NUMBER	mm	inch								
04 B-1	70106007	70106057	70106087	6	-	2,80	1,85	4	7,4	5	0,07	2800	0,12
05 B-1	70108007	70108057	70108087	8	-	3,00	2,31	5	8,6	7,11	0,11	4700	0,18
06 B-1	70109007	70109057	70109087	9,525	3/8"	5,72	3,28	6,35	13,5	8,26	0,28	8200	0,4
08 B-1	70112007	70112057	70112087	12,7	1/2"	7,75	4,45	8,51	17	11,81	0,5	16400	0,68
10 B-1	70115007	70115057	70115087	15,875	5/8"	9,65	5,08	10,16	19,6	14,73	0,67	20500	0,91
12 B-1	70119007	70119057	70119087	19,05	3/4"	11,68	5,72	12,07	22,7	16,13	0,89	26500	1,12
16 B-1	70125007	70125057	70125087	25,40	1"	17,02	8,28	15,88	36,1	21,08	2,1	52500	2,59
16 B-1 (♦)	70125157	con coppiglia		25,40	1"	17,02	8,28	15,88	36,1	21,08	2,1	52500	2,59
20 B-1	70131007	70131057	70131087	31,75	1 1/4"	19,56	10,19	19,05	43,2	26,42	2,95	85500	3,68
24 B-1	70138007	70138057	70138087	38,1	1 1/2"	25,40	14,63	25,4	53,4	33,4	5,54	153900	6,85
28 B-1	70144007	70144057	70144087	44,45	1 3/4"	30,99	15,9	27,94	65,1	37,08	7,4	180000	8,56
32 B-1	70150007	70150057	70150087	50,8	2"	38,10	17,81	29,21	67,4	42,29	8,11	230000	9,49

DOUBLE

ISO N.	COUPLING		OFFSET	P		b ₁	d ₂	d ₁	a ²	g	f	breaking load N. mm ²	kg/m =	
	PART NUMBER	PART NUMBER	PART NUMBER	mm	inch									
06 B-2	70209007	70209057	70209087	9,525	3/8"	5,72	3,28	6,35	23,8	8,26	10,24	0,55	15500	0,76
08 B-2	70212007	70212057	70212087	12,7	1/2"	7,75	4,45	8,51	31	11,81	13,92	1	28500	1,31
10 B-2	70215007	70215057	70215087	15,875	5/8"	9,65	5,08	10,16	36,2	14,73	16,59	1,34	41000	1,79
12 B-2	70219007	70219057	70219087	19,05	3/4"	11,68	5,72	12,07	42,2	16,13	19,46	1,78	53000	2,22
16 B-2	70225007	70225057	70225087	25,40	1"	17,02	8,28	15,88	68	21,08	31,88	4,21	99500	5,03
16 B-2 (♦)	70225157	con coppiglia		25,40	1"	17,02	8,28	15,88	68	21,08	31,88	4,21	99500	5,03
20 B-2	70231007	70231057	70231087	31,75	1 1/4"	19,56	10,19	19,05	79,7	26,42	35,45	5,91	162000	7,33
24 B-2	70238007	70238057	70238087	38,1	1 1/2"	25,40	14,63	25,4	101,8	33,4	48,36	11,09	293000	13,5
28 B-2	70244007	70244057	70244087	44,45	1 3/4"	30,99	15,9	27,94	124,7	37,08	59,56	14,81	344000	16,96
32 B-2	70250007	70250057	70250087	50,8	2"	30,99	17,81	29,21	126	42,29	58,55	16,23	440000	18,74

TRIPLE

ISO N.	COUPLING		OFFSET	P		b ₁	d ₂	d ₁	a ²	g	f	breaking load N. mm ²	kg/m =	
	PART NUMBER	PART NUMBER	PART NUMBER	mm	inch									
06 B-3	70309007	70309057	70309087	9,525	3/8"	5,72	3,28	6,35	34	8,26	10,24	0,83	22800	1,12
08 B-3	70312007	70312057	70312087	12,7	1/2"	7,75	4,45	8,51	44,9	11,81	13,92	1,5	41000	1,94
10 B-3	70315007	70315057	70315087	15,875	5/8"	9,65	5,08	10,16	52,8	14,73	16,59	2,02	61500	2,68
12 B-3	70319007	70319057	70319087	19,05	3/4"	11,68	5,72	12,07	61,7	16,13	19,46	2,68	80000	3,32
16 B-3	70325007	70325057	70325087	25,40	1"	17,02	8,28	15,88	99,9	21,08	31,88	6,32	149000	7,65
16 B-3 (♦)	70325157	con coppiglia		25,40	1"	17,02	8,28	15,88	99,9	21,08	31,88	6,32	149000	7,65
20 B-3	70331007	70331057	70331087	31,75	1 1/4"	19,56	10,19	19,05	116,1	26,42	35,45	8,86	244000	10,96
24 B-3	70338007	70338057	70338087	38,1	1 1/2"	25,40	14,63	25,4	150,2	33,4	48,36	16,64	438000	20,2
28 B-3	70344007	70344057	70344087	44,45	1 3/4"	30,99	15,9	27,94	184,3	37,08	59,56	22,21	516000	25,38
32 B-3	70350007	70350057	70350087	50,8	2"	30,99	17,81	29,21	184,5	42,29	58,55	24,34	671000	28,04

Please note: all QRC® chains are subject to pretensioning. This operation is made in order to fix dimension and stretching.



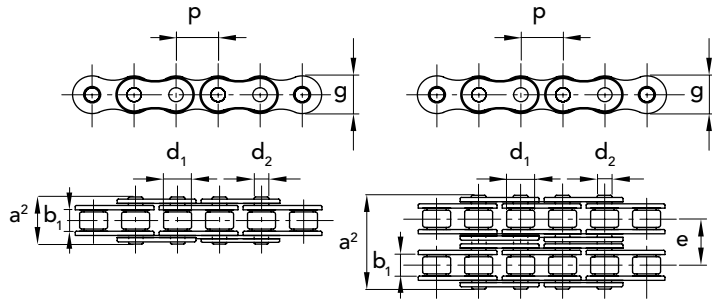
CAD drawings available on our site
www.chiaravalli.com

Quantity, availability and prices
on B2B Chiaravalli



CHAINS MANUFACTURED
BY AN **ISO 9001** CERTIFIED
FACTORY

Pack of 5m



f = resistant surface

SIMPLE - STAINLESS STEEL AISI 304

ISO N.	CHAIN P. NUMBER	COUPLING P. NUMBER	OFFSET P. NUMBER	P	b ₁	d ₂	d ₁	a ²	g	e	f	breaking load N. mm ²	kg/m	
				mm	inch	min. mm	mm	max mm	max mm	mm	cm ²		=	
05 B-1	74108007	74108057	74108087	8,00	-	3	2,31	5	8,6	7,11	0,11	0,18	3400	0,18
06 B-1	74109007	74109057	74109087	9,53	3/8"	5,72	3,28	6,35	13,5	8,26	0,28	0,41	4400	0,40
08 B-1	74112007	74112057	74112087	12,70	1/2"	7,75	4,45	8,51	17	11,81	0,5	0,7	9800	0,68
10 B-1	74115007	74115057	74115087	15,88	5/8"	9,65	5,08	10,16	19,6	14,73	0,67	0,95	13600	0,91
12 B-1	74119007	74119057	74119087	19,05	3/4"	11,68	5,72	12,07	22,7	16,13	0,89	1,25	15000	1,12
16 B-1	74125007	74125057	74125087	25,40	1"	17,02	8,28	15,88	36,1	21,08	2,1	2,7	39500	2,59

DOUBLE - STAINLESS STEEL AISI 304

ISO N.	CHAIN P. NUMBER	COUPLING P. NUMBER	OFFSET P. NUMBER	P	b ₁	d ₂	d ₁	a ²	g	e	f	breaking load N. mm ²	kg/m	
				mm	inch	min. mm	mm	max mm	max mm	mm	cm ²		=	
06 B-2	74209007	74209057	74209087	9,53	3/8"	5,72	3,28	6,35	23,8	8,26	10,24	0,55	8400	1,35
08 B-2	74212007	74212057	74212087	12,70	1/2"	7,75	4,45	8,51	31	11,81	13,92	1	16950	1,85
10 B-2	74215007	74215057	74215087	15,88	5/8"	9,65	5,08	10,16	36,2	14,73	16,59	1,34	27000	2,50
12 B-2	74219007	74219057	74219087	19,05	3/4"	11,68	5,72	12,07	42,2	16,13	19,46	1,78	29700	5,40
16 B-2	74225007	74225057	74225087	25,40	1"	17,02	8,28	15,88	68	21,08	31,88	4,21	69000	0,78

NICKEL - PLATED

ISO N.	CHAIN P. NUMBER	COUPLING P. NUMBER	OFFSET P. NUMBER	P	b ₁	d ₂	d ₁	a ²	g	f	breaking load N. mm ²	kg/m	
				mm	inch	min. mm	mm	max mm	max mm	cm ²		=	
06 B-1	73109007	73109057	73109087	9,53	3/8"	5,72	3,28	6,35	13,5	8,26	0,28	8200	0,41
08 B-1	73112007	73112057	73112087	12,70	1/2"	7,75	4,45	8,51	17	11,81	0,5	16400	0,70
10 B-1	73115007	73115057	73115087	15,88	5/8"	9,65	5,08	10,16	19,6	14,73	0,67	20500	0,95
12 B-1	73119007	73119057	73119087	19,05	3/4"	11,68	5,72	12,07	22,7	16,13	0,89	26500	1,25
16 B-1	73125007	73125057	73125087	25,40	1"	17,02	8,28	15,88	36,1	21,08	2,1	52500	2,70

Please note: all QRC® chains are subject to pretensioning.
This operation is made in order to fix dimension and stretching.

CAD drawings available on our site
www.chiaravalli.com

Quantity, availability and prices
on B2B Chiaravalli

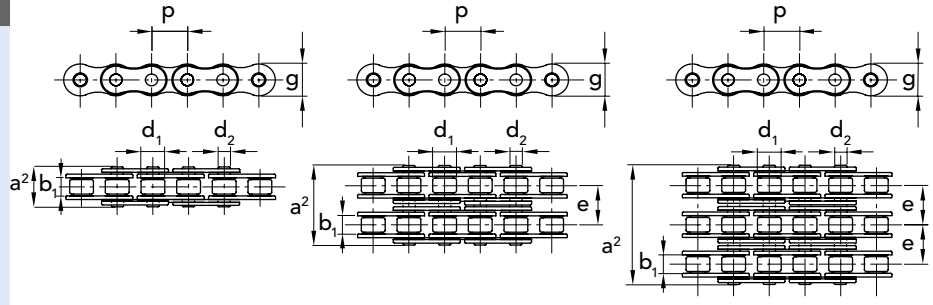




CHAINS MANUFACTURED BY AN ISO 9001 CERTIFIED FACTORY

Please note: all QRC® chains are subject to pretensioning. This operation is made in order to fix dimension and stretching.

Pack of 5m



f = resistant surface

SIMPLE "ANSI" ASA

ANSI N.	CHAIN P. NUMBER	COUPLING P. NUMBER	OFFSET P. NUMBER	P		b ₁ min. mm	d ₂ mm	d ₁ max mm	a ² max mm	g max mm	f cm ²	breaking load N. mm ²	kg/m =
				mm	inch								
35-1	71103007	71103057	71103087	9,525	3/8"	4,77	3,58	5,08	13,2	9,05	0,27	7350	0,34
40-1	71104007	71104057	71104087	12,7	1/2"	7,95	3,96	7,92	17,8	12,07	0,44	12900	0,63
50-1	71105007	71105057	71105087	15,875	5/8"	9,53	5,08	10,16	21,8	15,09	0,7	20200	1,04
60-1	71106007	71106057	71106087	19,05	3/4"	12,7	5,94	11,91	26,9	18,08	1,06	28900	1,52
80-1	71108007	71108057	71108087	25,40	1"	15,88	7,92	15,88	33,5	24,13	1,79	51300	2,58
100-1	71110007	71110057	71110087	31,75	1 1/4"	19,05	9,53	19,05	41,1	30,18	2,62	80200	3,85
120-1	71112007	71112057	71112087	38,1	1 1/2"	25,4	11,1	22,23	50,8	36,2	3,94	115000	5,61
140-1	71114007	71114057	71114087	44,45	1 3/4"	25,4	12,7	25,4	54,9	42,24	4,72	156300	7,24
160-1	71116007	71116057	71116087	50,8	2"	31,75	14,27	28,58	65,5	48,26	6,5	205500	9,91

DOUBLE "ANSI" ASA

ANSI N.	CHAIN P. NUMBER	COUPLING P. NUMBER	OFFSET P. NUMBER	P		b ₁ min. mm	d ₂ mm	d ₁ max mm	a ² max mm	g max mm	e mm	f cm ²	breaking load N. mm ²	kg/m =
				mm	inch									
35-2	71203007	71203057	71203087	9,525	3/8"	4,77	3,58	5,08	21,6	9,05	10,13	0,54	14700	0,67
40-2	71204007	71204057	71204087	12,7	1/2"	7,95	3,96	7,92	32,3	12,07	14,38	0,88	25600	1,26
50-2	71205007	71205057	71205087	15,875	5/8"	9,53	5,08	10,16	39,9	15,09	18,11	1,4	40400	2,05
60-2	71206007	71206057	71206087	19,05	3/4"	12,7	5,94	11,91	49,8	18,08	22,78	2,12	57800	3,01
80-2	71208007	71208057	71208087	25,40	1"	15,88	7,92	15,88	62,7	24,13	29,29	3,58	102700	2,13
100-2	71210007	71210057	71210087	31,75	1 1/4"	19,05	9,53	19,05	77	30,18	35,76	5,24	160400	7,64
120-2	71212007	71212057	71212087	38,1	1 1/2"	25,4	11,1	22,23	96,3	36,2	45,44	7,88	230000	11,13
140-2	71214007	71214057	71214087	44,45	1 3/4"	25,4	12,7	25,4	103,6	42,24	48,87	9,44	312600	14,37
160-2	71216007	71216057	71216087	50,8	2"	31,75	14,27	28,58	124,2	48,26	58,55	13	411000	19,68

TRIPLE "ANSI" ASA

ANSI N.	CHAIN P. NUMBER	COUPLING P. NUMBER	OFFSET P. NUMBER	P		b ₁ min. mm	d ₂ mm	d ₁ max mm	a ² max mm	g max mm	e mm	f cm ²	breaking load N. mm ²	kg/m =
				mm	inch									
35-3	71303007	71303057	71303087	9,525	3/8"	4,77	3,58	5,08	31,8	9,05	10,13	0,81	22050	0,99
40-3	71304007	71304057	71304087	12,7	1/2"	7,95	3,96	7,92	46,7	12,07	14,38	1,32	38300	1,98
50-3	71305007	71305057	71305087	15,875	5/8"	9,53	5,08	10,16	57,9	15,09	18,11	2,1	60600	3,06
60-3	71306007	71306057	71306087	19,05	3/4"	12,7	5,94	11,91	72,6	18,08	22,78	3,18	86700	4,50
80-3	71308007	71308057	71308087	25,40	1"	15,88	7,92	15,88	91,7	24,13	29,29	5,37	154100	7,67
100-3	71310007	71310057	71310087	31,75	1 1/4"	19,05	9,53	19,05	113	30,18	35,76	7,86	240600	11,43
120-3	71312007	71312057	71312087	38,1	1 1/2"	25,4	11,1	22,23	141,7	36,2	45,44	11,82	345000	16,67
140-3	71314007	71314057	71314087	44,45	1 3/4"	25,4	12,7	25,4	152,4	42,24	48,87	14,16	468900	21,51
160-3	71316007	71316057	71316087	50,8	2"	31,75	14,27	28,58	182,9	48,26	58,55	19,5	616400	29,45

SIMPLE REINFORCED

ANSI N.	CHAIN P. NUMBER	COUPLING P. NUMBER	OFFSET P. NUMBER	P		b ₁ min. mm	d ₂ mm	d ₁ max mm	a ² max mm	g max mm	f cm ²	breaking load N. min.	kg/m =
				mm	inch								
60-H1	72906007	72906057	72906087	19,05	3/4"	12,7	5,94	11,91	28,9	18,08	1,06	49000	1,70
80-H1	72908007	72908057	72908087	25,40	1"	15,88	7,92	15,88	36,5	24,13	1,79	84800	2,90

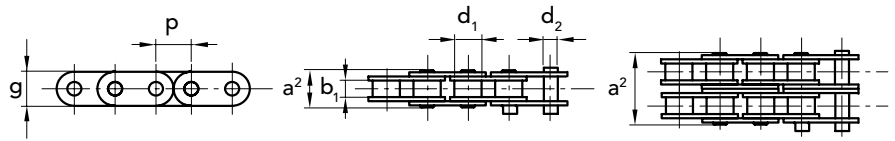
CAD drawings available on our site www.chiaravalli.com

Quantity, availability and prices on B2B Chiaravalli



CHAINS MANUFACTURED
BY AN **ISO 9001** CERTIFIED
FACTORY

Pack of 5m



f = resistant surface

SIMPLE PLATE STRAIGHT

ISO N.	CHAIN	COUPLING	OFFSET	P		b ₁	d ₂	d ₁	a ²	g	f	breaking	kg/m
	P. NUMBER	P. NUMBER	P. NUMBER	mm	inch	min. mm	mm	max mm	max mm	max mm	cm ²	N. mm ²	=
08B1	74112607	74112657	74112687	12,70	1/2"	7,75	4,45	8,51	17,0	11,81	0,5	16400	0,80
10B1	74115607	74115657	74115687	15,875	5/8"	9,65	5,08	10,16	19,6	14,73	0,67	20600	1,00
12B1	74119607	74119657	74119687	19,05	3/4"	11,68	5,72	12,07	22,7	16,13	0,89	26600	1,30
16B1	74125607	74125657	74125687	25,40	1"	11,02	8,28	15,88	36,1	21,08	2,10	52700	2,90

DOUBLE PLATE STRAIGHT

ISO N.	CHAIN	COUPLING	OFFSET	P		b ₁	d ₂	d ₁	a ²	g	f	breaking	kg/m
	P. NUMBER	P. NUMBER	P. NUMBER	mm	inch	min. mm	mm	max mm	max mm	max mm	cm ²	N. mm ²	=
10B2	74215607	74215657	74215687	15,88	5/8"	9,65	5,08	10,16	36,2	14,73	1,34	41100	2,50
12B2	74219607	74219657	74219687	19,05	3/4"	11,68	5,72	12,07	42,2	16,13	1,78	53300	2,60

Please note: all QRC® chains are subject to pretensioning.
This operation is made in order to fix dimension and stretching.

CAD drawings available on our site
www.chiaravalli.com

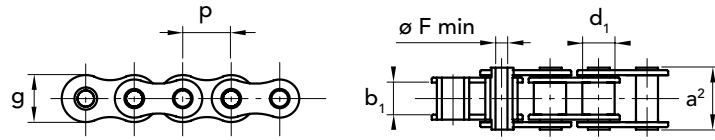
Quantity, availability and prices
on B2B Chiaravalli





CHAINS MANUFACTURED BY AN ISO 9001 CERTIFIED FACTORY

Pack of 5m



f = resistant surface

PINS DRILLED

RIFERIM. N.	CHAIN P. NUMBER	COUPLING P. NUMBER	OFFSET P. NUMBER	P		b ₁	d ₁	a ²	Ø F	g	f	breaking load	kg/m
				mm	inch	min. mm	mm	max mm	max mm	max mm	cm ²	N. mm ²	=
08 BHP-1	74112707	74112757	74112787	12,7	1/2"	7,75	8,51	17,00	4,4	11,7	0,7	13.500	0,50
10 BHP-1	74115707	74115757	74115787	15,875	5/8"	9,65	10,16	21,00	5,1	14	1,0	20.000	0,80

CHAINS PINS DRILLED QRC®

Please note: all QRC® chains are subject to pretensioning. This operation is made in order to fix dimension and stretching.

CAD drawings available on our site www.chiaravalli.com

Quantity, availability and prices on B2B Chiaravalli





COUPLING
2 ATTACKS



COUPLING
1 ATTACK



COUPLING
BOLTS DRILLED



COUPLING
SOLID COUPLING PINS



COUPLING
PIN SURFACE



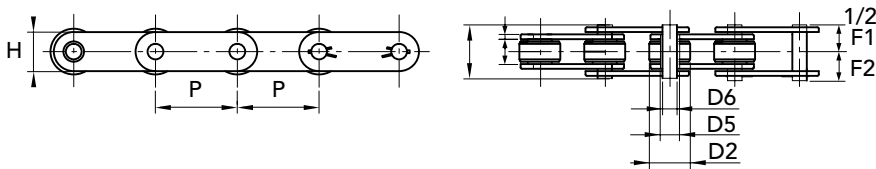


CHAINS MANUFACTURED BY AN **ISO 9001** CERTIFIED FACTORY

Pack of 5m

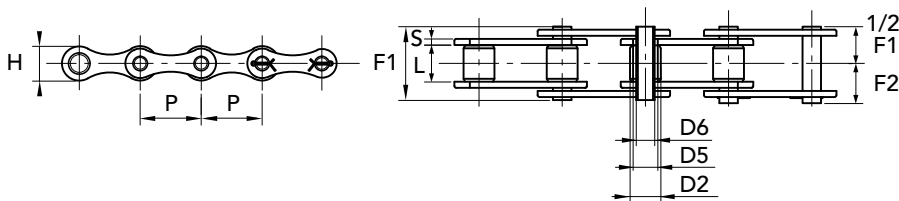
f = resistant surface

SOLID COUPLING PINS



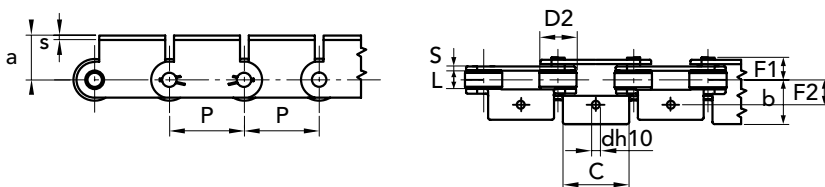
CHAIN	CHAIN P. NUMBER	COUPLING P. NUMBER	P mm	L mm	D2 mm	D5 mm	D6 mm	H mm	S mm	F1 mm	F2 mm	breaking load N. mm ²	kg/m catena
1,1205	74502050	74502055	50	11,5	25	8,35	5,7	18	2,5	25,5	15,4	18000	1,70
1,1206	74502060	74502065	50	11,5	25	11	8	20	3	28,8	16,5	22000	7,90
1,1400	74504000	74504005	50	15	31	13,2	10	23	3	32,6	19,2	32000	3,00
1,1500	74505000	74505005	50	15	31	13,2	10	25	4	36,6	20,7	40000	3,90
1,1505	74505020	74505025	100	15	31	13,2	10	25	4	36,6	20,7	40000	2,70
1,1703	74507030	74507035	100	22	40	17	12	35	4	44	25	75000	4,9 0

SOLID COUPLING PINS TIPE "B"



CHAIN	CHAIN P. NUMBER	COUPLING P. NUMBER	P mm	L mm	D2 mm	D5 mm	D6 mm	H mm	S mm	F1 mm	F2 mm	breaking load N. mm ²	kg/m catena
1,1400 B	74514000	74514005	50	15	31	13,2	10	23	3	32,6	19,2	32000	2,50

SOLID COUPLING PINS WITH ATTACHMENTS



CHAIN	CHAIN P. NUMBER	COUPLING P. NUMBER	P mm	D2 mm	a mm	b mm	c mm	d mm	e mm	s mm	L mm	F2 mm	breaking load N. mm ²	kg/m attacco
1.1205 A1-01	74522050	74522055	50	25	24	22	46	6,5	36	2,5	11,5	12,75	18000	2,51

CAD drawings available on our site www.chiaravalli.com

Quantity, availability and prices on B2B Chiaravalli

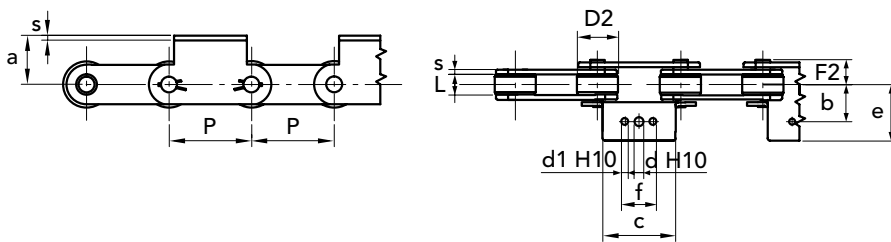


CHAINS MANUFACTURED
BY AN **ISO 9001** CERTIFIED
FACTORY

Pack of 5m

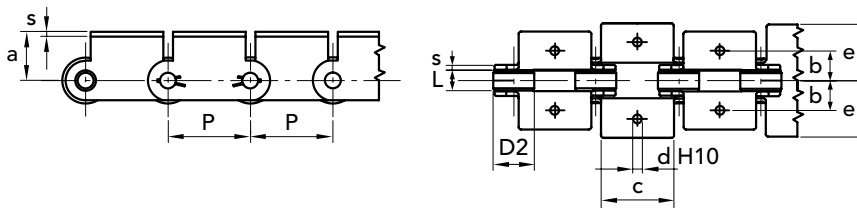
f = resistant surface

SOLID COUPLING PINS WITH ATTACHMENTS



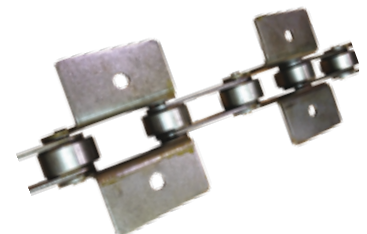
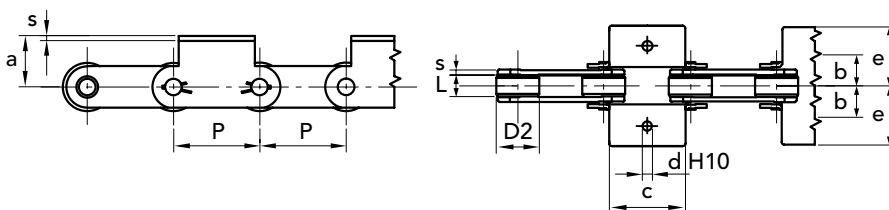
CHAIN	CHAIN P. NUMBER	COUPLING P. NUMBER	P mm	D2 mm	a mm	b mm	c mm	d mm	e mm	s mm	d1 mm	f mm	L mm	F2 mm	breaking load N. mm ²	kg/m
1.1205 A1-02	74532050	74522055	50	25	24	22	46	6,5	36	2,5	-	-	11,5	12,75	18000	2,50
1.1400 A3-02	74534000	74534005	50	31	35	31	60	10,5	48,5	3	8,5	25	15	16,3	32000	4,23
1.1500 A3-02	74535000	74535005	50	31	35	32	45	10,5	48	4	8,5	25	15	18,7	40000	4,63

SOLID COUPLING PINS WITH ATTACHMENTS



CHAIN	CHAIN P. NUMBER	COUPLING P. NUMBER	P mm	D2 mm	a mm	b mm	c mm	d mm	e mm	s mm	L mm	breaking load N. mm ²	kg/m
1.1205 K1-01	74542050	74542055	50	25	24	22	46	6,5	36	2,5	11,5	18000	3,19

SOLID COUPLING PINS WITH ATTACHMENTS



CHAIN	CHAIN P. NUMBER	COUPLING P. NUMBER	P mm	D2 mm	a mm	b mm	c mm	d mm	e mm	s mm	L mm	breaking load N. mm ²	kg/m
1.1205 K1-02	74552050	74542055	50	25	24	22	46	6,5	36	2,5	11,5	18000	2,50

CAD drawings available on our site
www.chiaravalli.com

Quantity, availability and prices
on B2B Chiaravalli

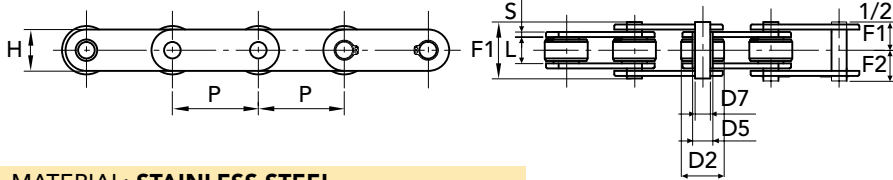


CHAINS MANUFACTURED BY AN ISO 9001 CERTIFIED FACTORY

Pack of 5m

f = resistant surface

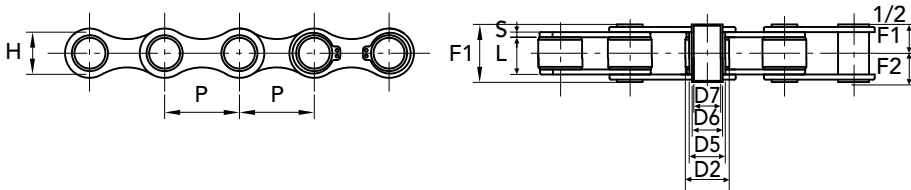
STUD PIERCED



MATERIAL: STAINLESS STEEL

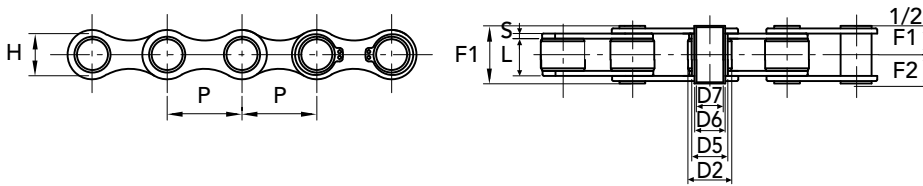
CHAIN	CHAIN P. NUMBER	COUPLING P. NUMBER	P mm	L mm	D2 mm	D5 mm	D6 mm	D7 mm	H mm	S mm	F1 mm	F2 mm	breaking load N. mm ²	kg/m chain
1,2250	74602500	74602505	50	11,5	25	11	9	6,2	20	2,5	26	14,5	30000	1,80
1,2250 SS	74695400	74695405	50	11,5	25	11	9	6,2	20	2,5	26	14,5	20000	1,80
1,2400	74604000	74604005	50	15	31	17	14	10,2	25	3	31	17,5	35000	3,00
1,2500	74605000	74605005	50	15	31	17	14	10,2	25	4	35	19,5	40000	3,60
1,2501	74605010	74605015	75	15	31	17	14	10,2	25	4	35	19,5	40000	3,10
1,2502	74605020	74605025	100	15	31	17	14	10,2	25	4	35	19,5	40000	2,60

STUD PIERCED



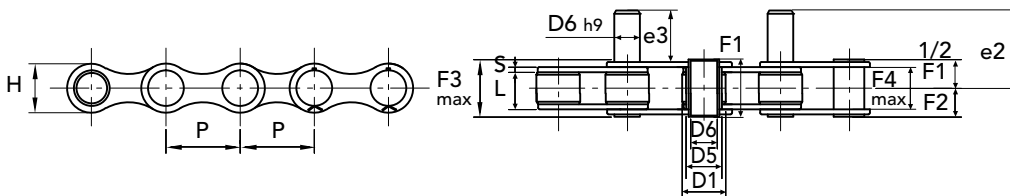
CHAIN	CHAIN P. NUMBER	COUPLING P. NUMBER	P mm	L mm	D2 mm	D5 mm	D6 mm	D7 mm	H mm	S mm	F1 mm	F2 mm	breaking load N. mm ²	kg/m chain
1.3520 R	74605200	74605205	35	16	20	17	14	10,2	26	2,5	30	16,7	25000	2,20
1,3520 Z	74615200	74615205	35	16	20	17	14	10,2	26	2,5	30	16,7	25000	2,20

A GALVANIZED BOLTS DRILLED



CHAIN	CHAIN P. NUMBER	COUPLING P. NUMBER	P mm	L mm	D1 mm	D5 mm	D6 mm	D7 mm	H mm	S mm	F1 mm	F2 mm	breaking load N. mm ²	kg/m chain
1.1260 Z	74612600	74612605	41,75	20,5	17	13,8	11	8,3	21,4	3	36	22,7	27	1,50

A PINS, PROJECTIONS GALVANIZED



CHAIN	CHAIN P. NUMBER	COUPLING P. NUMBER	P mm	D2 mm	a mm	b mm	c mm	d mm	e mm	s mm	L mm	F2 mm	breaking load N. mm ²	kg/m chain			
1.3521 Z	74615210	74615215	35	16	20	13	10	48,5	26	2,5	31	19	35	21	21,5	35000	2,80

CAD drawings available on our site www.chiaravalli.com

Quantity, availability and prices on B2B Chiaravalli


Standard length m 2 - m 3 - 4 on request

Material: PE-UHMW

High molecular weight polyethylene (p.m. other 1.000.000).

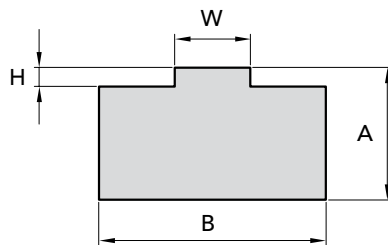
Color: green

Specific gravity g/cm³ 0,945

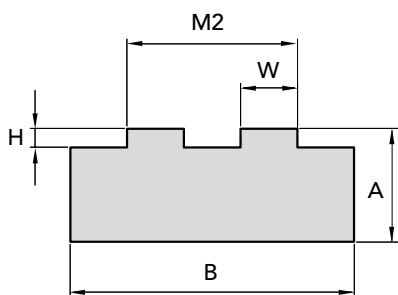
Dynamic friction coefficient 0.2 (P = 0.05 N/mm² - V = 0.6 m/s - T = 40°C)

Temperature range : -200°C ÷ 60°C. For a brief period for contact 80°C.

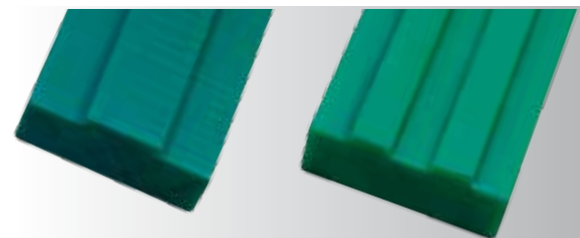
Linear thermal expansion: mm 2 every 10°C from the temperature of 20°C.

PROFILE "T"


Profile "T" for SIMPLE chain		CHAIN P. NUMBER	CHAIN	ISO	Size Guide		Weight Kg/m
AxB					H	W	
GCT-06	10 x 15	76109010	3/8"x7/32"	06 B-1	1,5	5,4	0,13
GCT-08	10 x 20	76112010	1/2"x5/16"	08 B-1	2,2	7,4	0,18
	15 x 20	76112015					0,26
	20 x 20	76112020					0,34
GCT-10	15 x 20	76115015	5/8"x3/8"	10 B-1	2,6	9,2	0,25
	20 x 20	76115020					0,35
GCT-12	15 x 25	76119015	3/4"x7/16"	12 B-1	2,4	11,3	0,32
	20 x 25	76119020					0,43
GCT-16	15 x 40	76125015	1"x17,02 mm	16 B-1	3,5	16,5	0,45
	20 x 40	76125020					0,68

PROFILE "T2"


Profile "T2" for DOUBLE chain		CHAIN P. NUMBER	CHAIN	ISO	Size Guide			Weight Kg/m
AxB					H	M2	W	
GC-T2-06	10 x 25	76209010	3/8"x7/32"	06 B-2	1,5	15,74	5,4	0,22
GC-T2-08	10 x 35	76212010	1/2"x5/16"	08 B-2	2,2	21,42	7,4	0,30
	15 x 35	76212015						0,46
	20 x 35	76212020						0,63
GC-T2-10	10 x 40	76215010	5/8"x3/8"	10 B-2	2,6	25,79	9,2	0,32
	15 x 40	76215015						0,54
	20 x 40	76215020						0,77
GC-T2-12	15 x 45	76219015	3/4"x7/16"	12 B-2	2,4	30,76	11,3	0,62
	20 x 45	76219020						0,85
GC-T2-16	15 x 65	76225015	1"x17 02 mm	16 B-2	3,5	48,38	16,5	0,86
	20 x 65	76225020						1,19



CAD drawings available on our site
www.chiaravalli.com

Quantity, availability and prices
 on B2B Chiaravalli



Standard length m 2 - m 3 - 4 on request

Material: PE-UHMW

High molecular weight polyethylene (p.m. other 1.000.000).

Color: green

Specific gravity g/cm³ 0,945

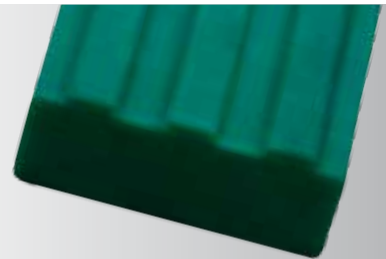
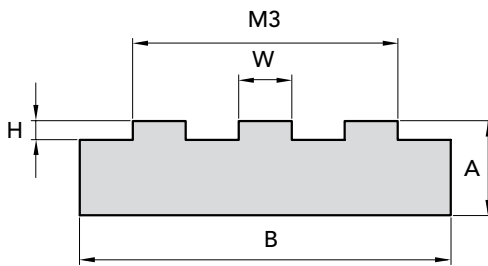
Dynamic friction coefficient 0.2 (P = 0.05 N/mm² - V = 0.6 m/s - T = 40°C)

Temperature range : -200°C ÷ 60°C. For a brief period for contact 80°C.

Linear thermal expansion: mm 2 every 10°C from the temperature of 20°C.

PROFILE "T3"

Profile "T3" for TRIPL chain	CHAIN P. NUMBER	CHAIN	ISO	Size Guide			Weight Kg/m
				H	M3	W	
AxB							
GC-T3-06 10 x 35	76309010	3/8"x7/32"	06 B-3	1,5	25,88	5,4	0,77
GC-T3-08 10 x 45	76312010	1/2"x5/16"	08 B-3	2,2	35,24	7,4	0,82
15 x 45	76312015						1,05
20 x 45	76312020						1,27
GC-T3-10 10 x 55	76315010	5/8"x3/8"	10 B-3	2,6	42,38	9,2	0,85
15 x 55	76315015						1,13
20 x 55	76315020						1,40
GC-T3-12 15 x 60	76319015	3/4"x7/16"	12 B-3	2,4	50,22	11,3	0,86
20 x 60	76319020						1,16





Standard length m 2 - m 3 - 4 on request

Material: PE-UHMW

High molecular weight polyethylene (p.m. other 1.000.000).

Color: green

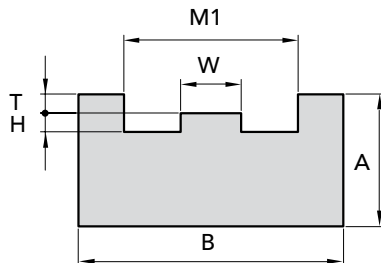
Specific gravity g/cm³ 0,945

Dynamic friction coefficient 0.2 (P = 0.05 N/mm² - V = 0.6 m/s - T = 40°C)

Temperature range : -200°C ÷ 60°C. For a brief period for contact 80°C.

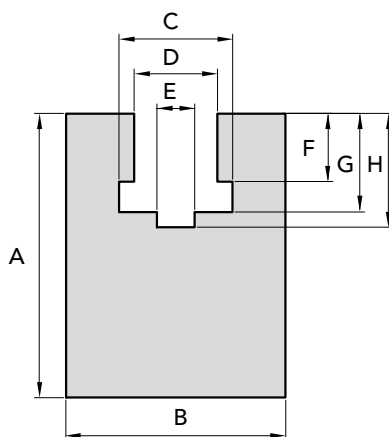
Linear thermal expansion: mm 2 every 10°C from the temperature of 20°C.

PROFILE "E"



Profile "E" for SIMPLE chain	AxB	CHAIN P. NUMBER	CHAIN ISO	Size Guide				Weight Kg/m
				H	M1	W	T	
GC-E-06	10 x 25	76409010	3/8"x7/32" 06 B-1	1,5	15	5,4	4,35	0,19
GC-E-08	15 x 30	76412015	1/2"x5/16" 08 B-1	2,2	20	7,4	7,2	0,36
GC-E-10	20 x 33	76415015	5/8"x3/8" 10 B-1	2,6	23	9,2	9,5	0,40
GC-E-12	20 x 38	76419020	3/4"x7/16" 12 B-1	2,4	28	11,3	11,11	0,57
GC-E-16	25 x 51	76425025	1"x17,02mm 16 B-1	3,5	41	16,5	16,48	0,83

PROFILE "K"



Profile "K" for SIMPLE chain	AxB	CHAIN P. NUMBER	CHAIN ISO	Size Guide						Weight Kg/m
				H	D	E	F	G	C	
GC-K-06	25 x 20	76509025	3/8"x7/32" 06 B-1	10	6,8	4	5,6	8,7	9,3	0,43
GC-K-08	30 x 24	76512030	1/2"x5/16" 08 B-1	12,7	9	5	7,4	11,5	12,8	0,55
GC-K-10	35 x 30	76515035	5/8"x3/8" 10 B-1	14,8	10,7	6	9,3	13,5	15,4	0,83
GC-K-12	35 x 40	76519035	3/4"x7/16" 12 B-1	17,5	12,7	7	11,3	15,9	16,9	1,10
GC-K-16	45 x 40	76525045	1"x17,02 16 B-1	26,8	16,5	9	16,6	25,7	24,4	1,22



CAD drawings available on our site
www.chiaravalli.com

Quantity, availability and prices
 on B2B Chiaravalli



Standard length m 2 - m 3 - 4 on request

Material: PE-UHMW

High molecular weight polyethylene (p.m. other 1.000.000).

Color: green

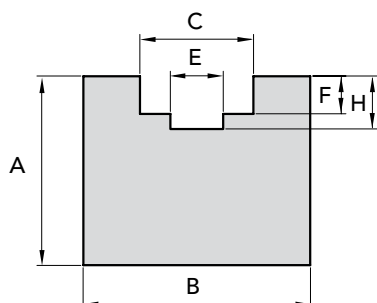
Specific gravity g/cm³ 0,945

Dynamic friction coefficient 0.2 (P = 0.05 N/mm² - V = 0.6 m/s - T = 40°C)

Temperature range : -200°C ÷ 60°C. For a brief period for contact 80°C.

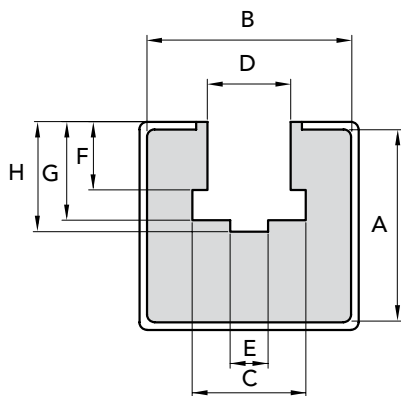
Linear thermal expansion: mm 2 every 10°C from the temperature of 20°C.

PROFILE "U"



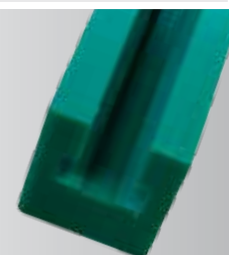
Profile "U" for SIMPLE chain	CHAIN P. NUMBER	CHAIN	ISO	Size Guide				Weight Kg/m
				H	M1	W	T	
AxB								
GC-U-06 15 x 20	76609015	3/8"x7/32"	06 B-1	4,2	4	2,8	9,2	0,26
GC-U-08 15 x 25	76612015	1/2"x5/16"	08 B-1	4,8	5	3,5	12,7	0,31
GC-U-10 15 x 25	76615015	5/8"x3/8"	10 B-1	5,1	6	3,6	15,2	0,30
GC-U-12 20 x 25	76619020	3/4"x7/16"	12 B-1	5,7	7	3,9	16,7	0,40

PROFILE "KG"



Profile "KG" for SIMPLE chain	CHAIN P. NUMBER	CHAIN	ISO	Size Guide						Weight Kg/m
				H	D	E	F	G	C	
AxB										
GC-KG-08 22,5 x 27	76712022	1/2"x5/16"	08 B-1 C10	13	8,7	5	7,4	11,5	12,8	1,30
GC-KG-10 22,5 x 27	76715022	5/8"x3/8"	10 B-1 C10	14,9	10,7	6	9,3	13,5	15,4	1,29
GC-KG-12 22,5 x 27	76719022	3/4"x7/16"	12 B-1 C10	17,5	12,3	7	11,3	15,9	16,9	1,28

Rail guide suitable for metal holder





Standard length m 2 - m 3 - 4 on request

Material: PE-UHMW

High molecular weight polyethylene (p.m. other 1.000.000).

Color: green

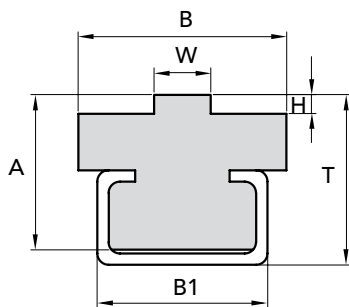
Specific gravity g/cm³ 0,945

Dynamic friction coefficient 0.2 (P = 0.05 N/mm² - V = 0.6 m/s - T = 40°C)

Temperature range : -200°C ÷ 60°C. For a brief period for contact 80°C.

Linear thermal expansion: mm 2 every 10°C from the temperature of 20°C.

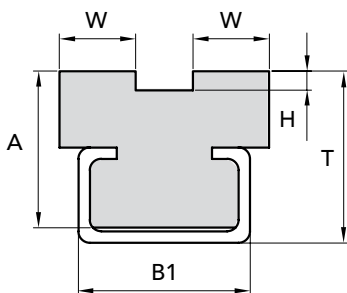
PROFILE "CT"



Rail guide suitable for metal holder

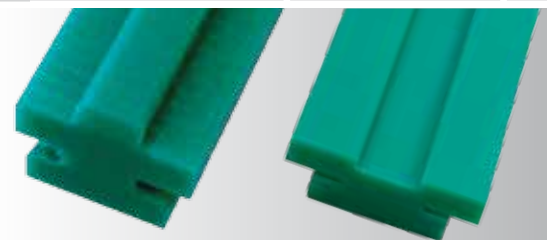
Profile "CT" for SIMPLE chain	AxB	CHAIN P. NUMBER	CHAIN ISO	Supp. met.	Size Guide H T W B2	Weight Kg/m
GC-CT-08	15 x 20	76812015	1/2"x5/16" 08 B-1	C3	2,2 17 7,4 20	0,82
GC-CT-10	15 x 20	76815015	5/8"x3/8" 10 B-1	C3	2,6 17 9,2 20	0,83
GC-CT-12	15 x 20	76819015	3/4"x7/16" 12 B-1	C3	2,4 17 11,3 20	0,84
GC-CT-16	15 x 28	76825015	1"x17,02 16 B-1	C5	3,5 18 16,5 28	1,24

PROFILE "CT2"



Rail guide suitable for metal holder

Profile "CT2" for SIMPLE chain	AxB	CHAIN P. NUMBER	CHAIN ISO	Supp. met.	Size Guide H T W B2	Weight Kg/m
GC-CT2-06	15 x 15,7	76909015	3/8"x7/32" 06 B-2	C3	1,5 17 5,4 20	0,74
GC-CT2-08	15 x 21,4	76912015	1/2"x5/16" 08 B-2	C3	2,2 17 7,4 20	0,84
GC-CT2-10	15 x 25,9	76915015	5/8"x3/8" 10 B-2	C5	2,6 19 9,2 28	0,85
GC-CT2-12	15 x 30,7	76919015	3/4"x7/16" 12 B-2	C5	2,4 19 11,3 28	1,25
GC-CT2-16	20 x 48,3	76925020	1"x17,02 16 B-2	C9	3,5 27 16,5 38	2,15

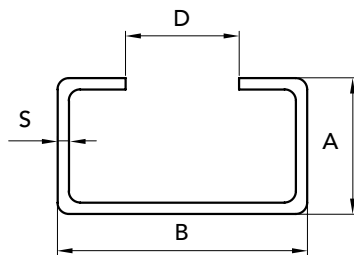




Material: GALVANIZED STEEL FE or AISI 304 STEEL

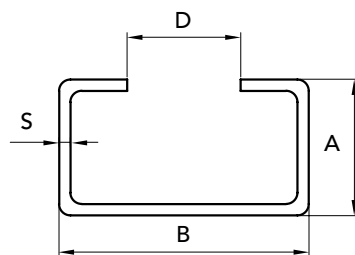
Profiles on request is running on customer's design.

GALVANIZED

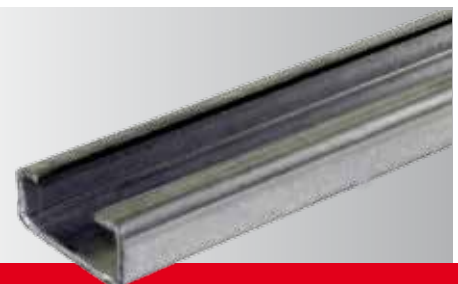


METAL SUPPORT	CHAIN P. NUMBER	length standard m.	Size Guide				Weight Kg/m
			A	B	D	S	
AxB							
C3 10 x 20	76003010	2	10	20	10	1,3	0,48
C5 12 x 28	76005012	2	12	28	14	1,5	0,85
C9 18 x 38	76009018	2	18	38	22	1,5	1,5
C10 24 x 30	76010024	2	24	30	20	1,5	0,95

STAINLESS STEEL SHEET



METAL SUPPORT	CHAIN P. NUMBER	length standard m.	Size Guide				Weight Kg/m
			A	B	D	S	
AxB							
C3 10 x 20	76003310	2	10	20	10	1,3	0,48
C5 12 x 28	76005312	2	12	28	14	1,5	0,85
C9 18 x 38	76009318	2	18	38	22	1,5	1,5
C10 24 x 30	76010324	2	24	30	20	1,5	0,95



CAD drawings available on our site
www.chiaravalli.com

Quantity, availability and prices on B2B Chiaravalli



ELECTRICAL

MOTORS AND

GEARBOXES

A large range of motors and gearboxes developed by Chiaravalli Group SpA and managed by our Logistics in Cavaria con Premezzo (Cantalupa).

We are able to supply and send any item to catalogue, in over 52 countries, with a minimum lead-time from order receipt.

